

# Product Datasheet: 1400032

Product: Modeswitch

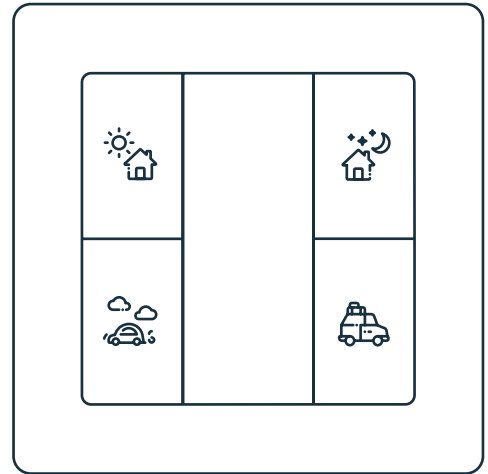
Model: F101E

EI-Number: 1400032

EAN: 7090038751176

Item package quantity: 1 pcs

● Colour: Black



## Product Info

futurehome Modeswitch is a battery operated wall switch with 4 push buttons. Paired to the futurehome Smarthub it enables quick control of the four predetermined settings of your home: **Home, Away, Sleep, Vacation**. The Modeswitch can also be set up to control scenarios or work in associations with other Z-Wave products. The Modeswitch fits System 55 frames, is easy to install and can be fastened with switch screws or double-sided tape.

## FUNCTIONS

- Battery operated wall switch
- Fits Gira System 55
- Controls Futurehome Modes: Home, Away, Sleep, Vacation
- LED
- Easy to install with screws or double-sided tape
- Supports encryption modes S0, S2 Authenticated Class, S2 Unauthenticated Class

This product is a security enabled Z-Wave Plus product with encryption, and must be used with a supported futurehome Smarthub

## TECHNICAL DATA

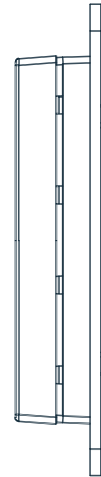
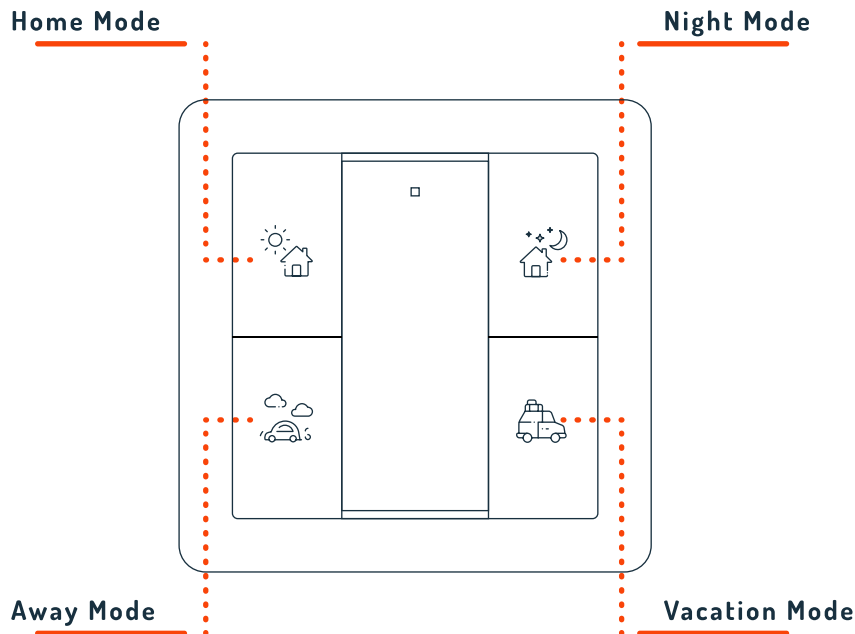
Protocol:	Z-Wave, 868,42 MHz	IP Code:	IP 20
SDK:	6.71.01	Size (LxWxH):	71,2 x 71,2 x 13,6 mm
Chip:	Z-Wave 500 chip	Explorer Frame	Yes
Power:	1 x CR2450 battery	Support:	Wall controller
Buttons:	4	Device Type:	Switch Remote
Operating temperature:	0 - 40°C	Generic Device Class:	Switch Remote Multilevel
Relative humidity:	8% - 80%	Specific Device Class:	No
Range:	Up to 20 meters (depending on surroundings)	Routing:	No
		Flir:	No
		Approvals:	CE, RoHS 2011/65/EU

## Installation Guide

Please read carefully the enclosed user manual before installing the Modeswitch, in order to ensure error-free operation. The **futurehome** Modeswitch unit comes as a complete set for flush mounting in standard European wall boxes with a 60mm diameter.

### FRONT SIDE

### SIDE



## Adding to a Z-Wave network

**Step 1.** Make sure the device does not belong to any Z-Wave network by pressing any button once. If the LED indicator does not turn on, the Modeswitch does not belong to any network, and you may continue to step 2. If the LED indicator turns on, it means that the Modeswitch has already been added to a network. You must then run the removal process (see "Removing from a Z-Wave network" in this guide) before moving on to step 2.

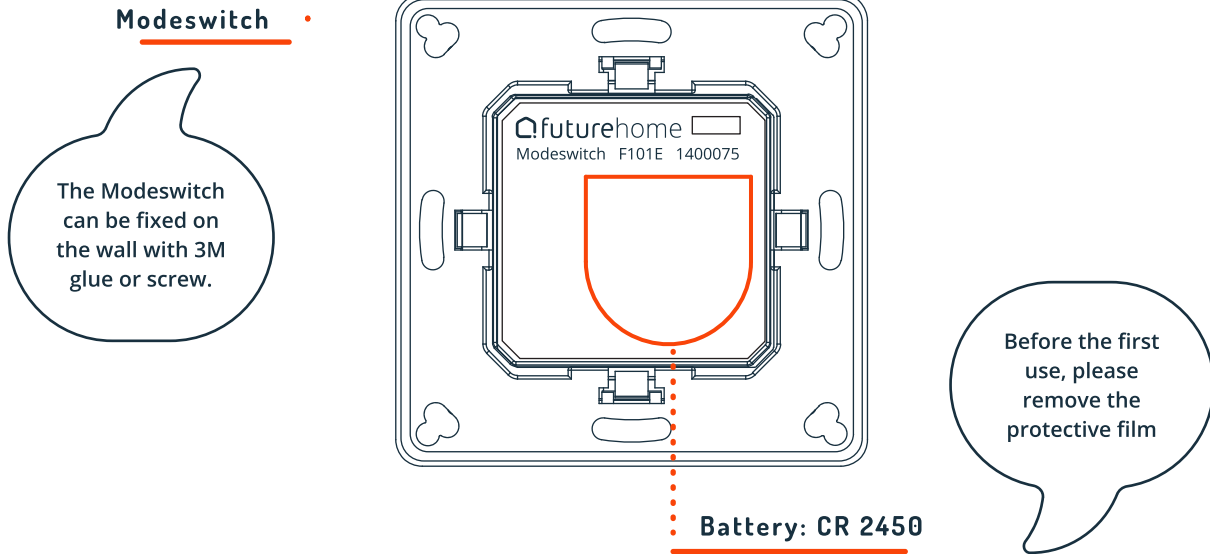
**Step 2.** Set the **futurehome** Smarthub in pairing mode (Please refer to support.futurehome.no on how to set the Smarthub in pairing mode).

**Step 3.** Press and hold down both buttons of Group 2 for 3 seconds. The LED indicator turns on, the Modeswitch will be set to adding mode, and stand by to be added to the network. When finished the LED indicator blinks 6 times quickly to indicate that the addition has been successful.

## How to check if the Modeswitch has already been added to a network

Press any button once. If the LED indicator does not turn on, the Modeswitch does not belong to any network. If the LED indicator turns on, it means that the Modeswitch has already been added to a network. You must then run the removal process (see "Removing from a Z-Wave network" in this guide) before adding the device to your network.

## BACK SIDE



## Removing from Z-Wave Network

Method I: Removing from the futurehome Smarthub:

**Step 1.** Set the futurehome Smarthub in exclusion mode.

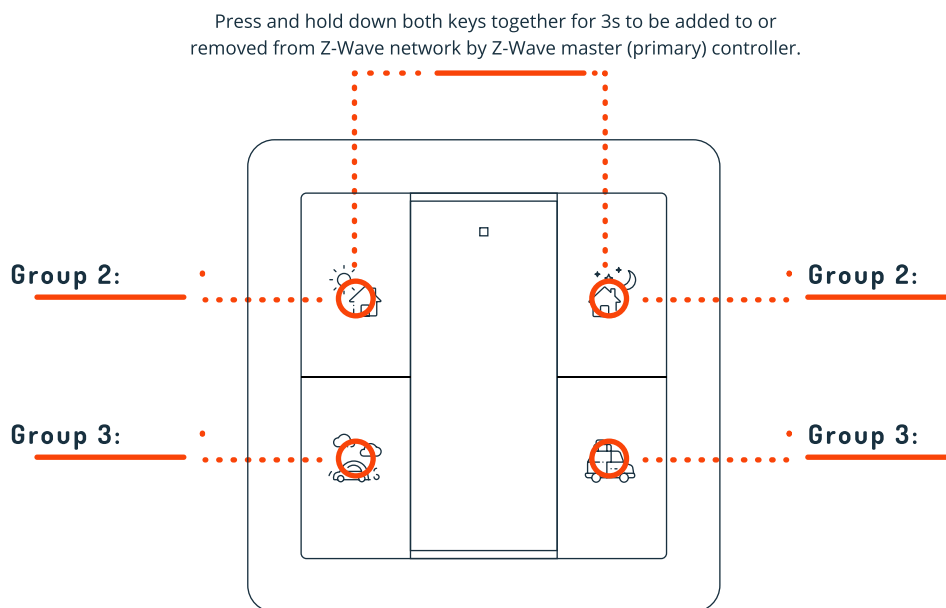
(Please refer to support.futurehome.no on how to set the Smarthub in exclusion mode).

**Step 2.** Press and hold down both left-buttons of Group 2 and 3 seconds, LED indicator turns on, the Modeswitch will be set to exclusion mode, and stand by to be removed. When finished the LED indicator blinks 4 times quickly to indicate successful removal.

**Method II:** A factory reset of the Modeswitch will force the Modeswitch to be removed from a network.

(Please refer to the part "Factory Reset" of this manual).

**Note:** Factory reset is not recommended for removing devices. Please use this procedure only if the futurehome Smarthub is missing or otherwise inoperable.



## FACTORY RESET

Press and hold down both buttons of Group 2 for a minimum of 10 seconds until the LED indicator turns on and then blinks 4 times quickly to indicate successful factory reset.

## Association

Z-Wave devices may control other Z-Wave devices. The relationship between one device controlling another device is called association. In order to control a subordinate device, the controlling device needs to maintain a list of devices that will receive controlling commands. These lists are called "Association Groups" and are activated when specific events are registered (e.g. sensor reports). In the case of an association group being triggered, all devices stored in the respective association group will receive a common wireless command.

## Association Groups

Each group supports maximum 5 nodes for association. A single device may be associated with multiple groups in the Smarthub simultaneously. In order to optimize your control experience, the smarthub will automatically remove devices that are not in operational status in their association groups at the time.

ASSOCIATION GROUPS	GROUP NAME	MAX NODES	DESCRIPTION
Group 1	Lifeline	5	<ul style="list-style-type: none"> <li>1. Send Command Class "Device Reset Locally Notification V1" to associated devices of this group to report factory reset information when factory reset the Modeswitch.</li> <li>2. When Modeswitch battery power value changes, send Command Class "Battery Report V1" to associated devices of this group to report power value information.</li> <li>3. Push once or press and hold any button to send scene activation command to the associated devices of this group using Command Class "Central Scene Notification V3"</li> </ul>
Group 2	Launch 1	5	<ul style="list-style-type: none"> <li>Push both buttons of Group 2 once to send ON/OFF command to associated devices of this group using Command Class "Basic Set V2". Press and hold down both buttons of Group 2 to send light intensity increase/decrease command to associated devices of this group using Command Class "Multilevel V4".</li> </ul>
Group 3	Launch 2	5	<ul style="list-style-type: none"> <li>Push both buttons of Group 3 onco to send ON/OFF command to asso- ciated devices of this group using Command Class "Basic Set V2". Press and hold down both buttons of Group 3 to send light intensity increase/decrease command to associated devices of this group using Command Class "Multilevel V4".</li> </ul>

## How to communicate with the device

The futurehome Modeswitch is in sleep mode most of the time to save battery power. It can not receive wireless commands when in sleep mode. Before the Smarthub may interact with the Modeswitch, the device must be activated manually first. Push any button once to activate the Modeswitch for 3s, and press and hold down both buttons of Group 2 for 1 second to activate the Modeswitch for 7s.

## Node Information frame

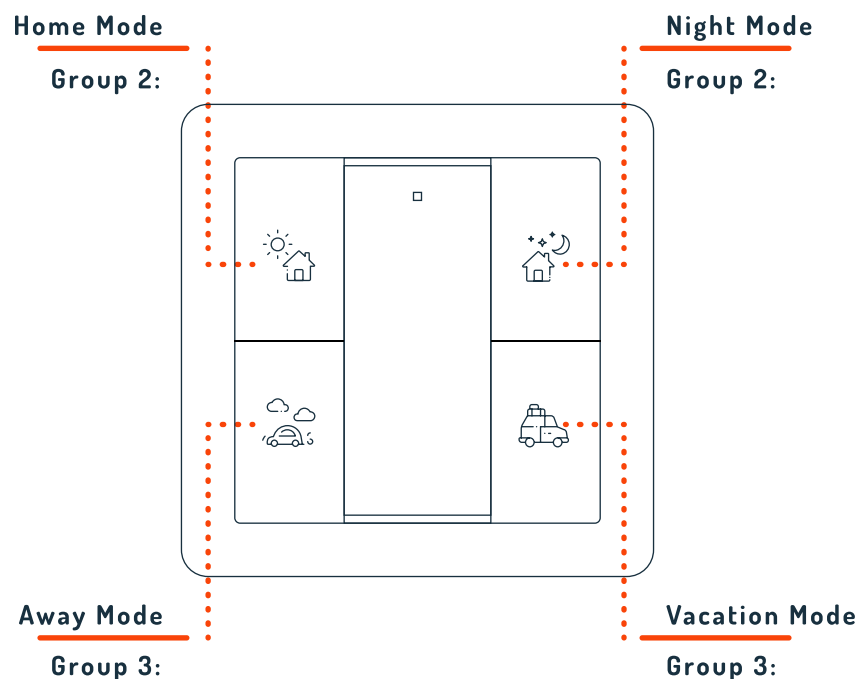
The Node Information Frame is the business card of a Z-Wave device. It contains information about the device type and the technical capabilities. The add and remove procedure of the device is confirmed by sending out a Node Information Frame. Besides this, it may be necessary for certain network operations to send out a Node Information Frame.

How to send out Node Information Frame:

Set the Modeswitch to adding/removing mode: Press and hold down both buttons of Group 2 for 3 seconds. The LED indicator turns on to indicate that the Modeswitch has already sent out a Node Information Frame. The user may repeat the operation to turn the adding/removing mode off.

## Operating the Device

- Push Home/Night Mode button of Group 2 once, to send ON/OFF command to all associated devices of Association Group 2.
- Press and hold down Home/Night Mode button of Group 2, to send light intensity increase/decrease command to all associated devices of Association Group 2.
- Push Away/Holiday Mode button of Group 3 once, to send ON/OFF command to all associated devices of Association Group 3.
- Press and hold down Away/Holiday Mode button of Group 3, to send light intensity increase/decrease command to all associated devices of Association Group 3.
- Push any button once or press and hold down any button to send scene activation command to association Group 1 using Command Class "Central Scene Notification V3".



## Supported Command Classes

- COMMAND\_CLASS\_ZWAVEPLUS\_INFO\_V2
- COMMAND\_CLASS\_ASSOCIATION\_V2
- COMMAND\_CLASS\_MULTI\_CHANNEL\_ASSOCIATION\_V3
- COMMAND\_CLASS\_CENTRAL\_SCENE\_V3
- COMMAND\_CLASS\_ASSOCIATION\_GRP\_INFO\_V1
- COMMAND\_CLASS\_TRANSPORT\_SERVICE\_V2
- COMMAND\_CLASS\_VERSION\_V2
- COMMAND\_CLASS\_MANUFACTURER\_SPECIFIC\_V2
- COMMAND\_CLASS\_DEVICE\_RESET\_LOCALLY\_V1
- COMMAND\_CLASS\_FIRMWARE\_UPDATE\_MD\_V4
- COMMAND\_CLASS\_POWERLEVEL\_V1
- COMMAND\_CLASS\_BATTERY\_V1
- COMMAND\_CLASS\_SECURITY\_V1
- COMMAND\_CLASS\_SECURITY\_2\_V1
- COMMAND\_CLASS\_WAKE\_UP\_V2
- COMMAND\_CLASS\_SUPERVISION\_V1

## Controlled Command Classes

- COMMAND\_CLASS\_CENTRAL\_SCENE\_V3
- COMMAND\_CLASS\_BASIC\_V2
- COMMAND\_CLASS\_SWITCH\_MULTILEVEL\_V4
- COMMAND\_CLASS\_MULTI\_CHANNEL\_V3
- COMMAND\_CLASS\_SECURITY\_V1
- COMMAND\_CLASS\_SECURITY\_2\_V1

## Statement of compliance with EU Directives

futurehome Modeswitch F101E are in compliance with the essential requirements and other relevant provisions of Directives: EN 60730-1:2016, as applicable. The conformity declaration(s) and technical documentation can be found at: [www.products.futurehome.io](http://www.products.futurehome.io).

Futurehome AS, Postboks 72, 0801 Oslo, Norway

Telephone number: (+47) 51 20 44 54

Website: [www.futurehome.io](http://www.futurehome.io)