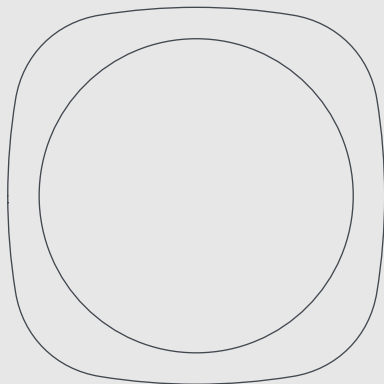


easee



User guide / Installation guide

# Equalizer

# Table of contents

## **Introduction**

Intended use	3
What is included?	3

---

## **Installation**

Customer setup	4
Installer setup	5

---

## **Daily use and operation**

Technical specifications	6
Led colours meaning	7
Practical details	8

### **IMPORTANT:**

Read carefully before use.  
Keep for future reference.

# Introduction

## Intended use

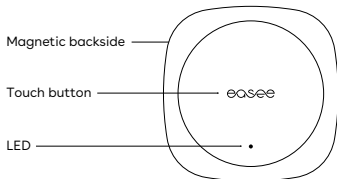
This product is intended for optimizing the power consumption by performing an automatic load balancing between the Easee Charging Robot(s) and the building. It avoids overload and power interruption while charging the electric vehicle (EV). In the event of unstable or non operational WiFi the device has a redundant Easee Link RF™ connection. Easee Link via radio may be limited by walls, concrete or other obstacles.

The product needs to be paired with a Charging Robot and connected to a supported meter with the cable provided. In order for the Equalizer to work, the smart meter's communication port in most cases needs to be activated. The Equalizer supports several smart meters. Find a full list of compatible meters at [easee.support](https://www.easee.com/support).

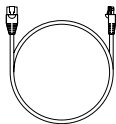
The product may only be operated with the approved operating parameters and under the specified environmental conditions (-20 °C to +50 °C). Do not use the product if it is damaged or does not function properly. Uses other than those specified here are not permitted.

# What is included?

## Equalizer

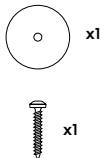


## Cable

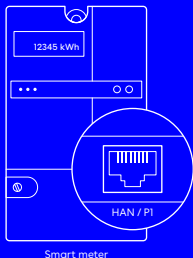


## Wall mounting kit

For non-metallic surfaces



## Customer setup



### 1 HAN port Activation

In Scandinavia, the communication port on the smart meter is most likely not activated. Contact your utility company to open the HAN port for use with the Equalizer.

If you are not in Scandinavia, skip to step 2.

### 2 Easee App Download

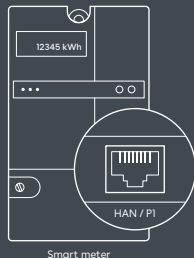
Scan the QR code to download the Easee App and create a free account. The app is available on App Store and Google Play.

### 3 Equalizer Setup

Add the Equalizer in the app, follow the on-screen installation guide and get ready to balance your energy smarter than ever before!

**NOTICE!** Follow these steps if you are a private customer installing the Equalizer in your own household.

## Installer setup



### 1 Download

Scan the QR code to download the Installer App and create a free account. The app is available on App Store and Google Play.

### 2 Setup

Add the Equalizer to a new or existing charging site using the Installer App and follow the on-screen installation guide to set it up.

### 3 Connect

Connect the Equalizer to the smart meter using the provided cable. The Equalizer will appear in the Easee Portal after a while.

**NOTICE!** Follow these steps if you are an installer and use the Installer App to configure the Equalizer in large commercial installations or private households.

# Technical specifications

## General

Product (mm): H: 110 x W: 110 x D: 27.5  
Packaging (mm): H: 130 x W: 130 x D: 39  
Operating temperature: -20 °C to +50 °C  
Weight: 95 g (P1 version)  
and 110 g (HAN version)  
IP degree: IP40  
Supply: 5-32 VDC 100 mA (P1 version) and  
20-32 VDC 30 mA (HAN version)  
RJ11 connector

## Installation

Cable length: 1.5 m  
RJ11 to RJ11 custom made cable (P1 version)  
and RJ11 to RJ45 custom made cable  
(HAN version)  
It can be extended using an extension cable:  
up to 15 m (P1 version) and up to 200 m (HAN  
version)



RJ11 (6 pins)



RJ45 (8 pins)

## Max transmitted power

**Radio:** 25 mW at 863-870 MHz.







**WiFi:** 50 mW at 2.4-2.472 GHz.

## Connectivity


Easee Link RF™ and WiFi\*  
HAN or P1 smart meter communication  
Modbus connection to energy meter  
Monitor power consumption with  
the Easee App  
RFID / NFC reader

\*WiFi is required for normal operation and  
for future software updates. When offline, it  
will use Easee Link RF™ as backup in small  
installations with one primary charger.

## LED colours meaning

-  White, fast flashing - Booting
-  White, breathing every 10s - Normal operation
-  Red / white, switching - No WiFi added<sup>1</sup>
-  Red, flashing - No data from power meter<sup>2</sup>
-  Red, breathing every 10s - Error<sup>3</sup>
-  Purple, breathing every 10s - Offline operation<sup>4</sup>

### Touch the Easee logo in the middle to check power consumption:

-  Blue, fast flashing - High power consumption

Blue, slow flashing - Low power consumption



Count the flashes for percentage - 1 flash (10%),  
2 flashes (20%), up to 10 flashes (100%)

3

**Hold the Easee logo for 3 seconds to check connectivity. You will see 2 flashes:**

1st flash - Easee Link RF status<sup>5</sup>

2nd flash - WiFi status

-  Green - Connected
-  Red - Not connected

<sup>1</sup> Use the Easee App to set up the WiFi.

<sup>2</sup> Contact your utility company to activate the HAN port.

<sup>3</sup> Go to <http://easee.support>.

<sup>4</sup> Check your internet connection.

<sup>5</sup> After booting, it can take a few minutes before Easee Link RF status flashes green.

## Practical details

### Charge faster

The Equalizer makes it possible to charge smarter, safer and faster if the installation is scaled accordingly. To enable its true potential, the rated value of the chargers circuit fuse should be as high as possible compared to the main fuse. Even in 1-phase setups, we recommend using a 3-phase cable to future proof the installation.

### Protection

The Equalizer is IP40. This means it has no protection against water. If placed outside the house, it must be installed inside a cabinet protected from the weather.

### Warranty

The device is free from material defects and is in accordance with laws and regulations for consumer protection in the country where the product is purchased. All correctly installed Easee hardware is covered by our 3 years\* limited warranty.

\*Some countries may have extended warranty.

### Standards

The EU Declaration of Conformity is available at the following address: [easee.support](https://www.easee.com/support).

### Maintenance

This product requires no maintenance. If it needs to be repaired, please contact your Easee supplier.

### Storage

The product should be stored in a tempered, dry and well-ventilated area in order to preserve the packaging and its contents. Relative humidity should not exceed 80 % and no corrosive gas should be present. Storage or transportation environment should never exceed the limits provided in the technical specifications.

### Disposal

This electronic equipment must not be disposed of in household waste. For the return of old devices, free collection and acceptance points may be available in your vicinity. Observe local regulations for correct and environmentally friendly disposal.



## Returns and complaints

Contact your distributor or Easee Customer Support at **easee.support** regarding the return and complaint of your product.

## Contact details

Easee AS  
Grenseveien 19  
4313 Sandnes, Norway  
Org. nr: 920 292 046

You can find additional contact details for your country at **easee.com**.

THIS DOCUMENT CONTAINS INFORMATION THAT IS SUBJECT TO CHANGE WITHOUT NOTICE.

The latest version of this publication can be downloaded at <http://easee.support>

No part of this publication may be reproduced or transmitted in any form or by any means, electronic or mechanical, including, but not limited to, copying, recording, retrieving data, or computer networks without the written permission of Easee AS.

Easee and all other Easee product names and slogans are trademarks or registered trademarks of Easee AS. Easee products can be protected by one or more patents.

All other products and services mentioned may be trademarks or service marks of their respective owners.

Illustrations of the product and user interface are exemplary and may differ from the actual appearance.

February 2022 - Version 4.02  
© 2020 by Easee AS. All rights reserved.



---

easee

Easee AS  
Grenseveien 19  
4313 Sandnes, Norway

[www.easee.com](http://www.easee.com)